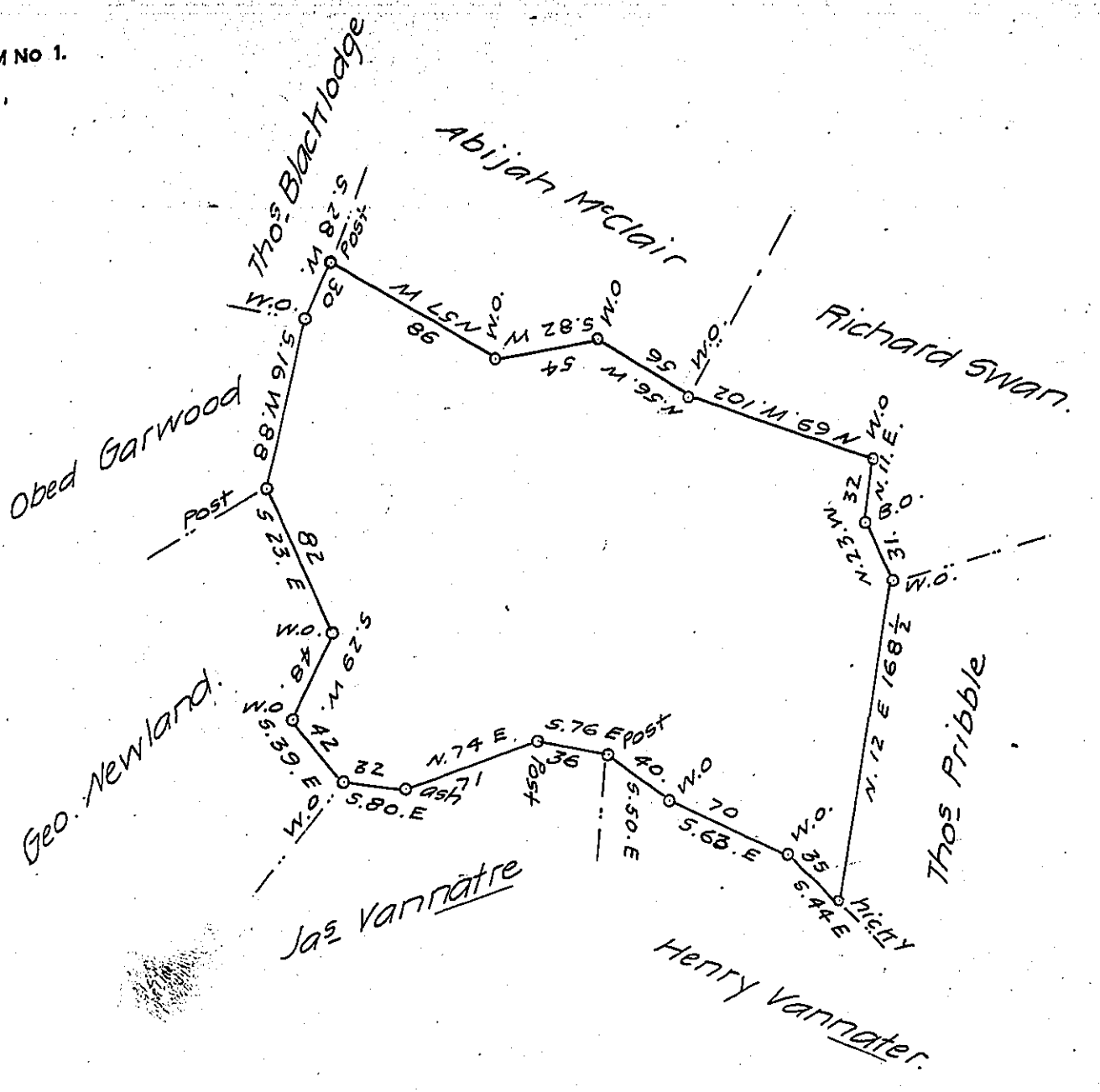


FORM NO 1.

County of Erie
all documents
portion of
for tract of
appropriated
by other person
and this
Surveyor



The above is the draught of a tract of land situate on the waters of the South fork of Ten Mile Creek called the Park containing 382 1/4 acres and allowance of Six Per Cent. Surveyed Jan. 11th, 1787. In pursuance of a Warrant granted Danl. More doct. Junr. 17th day of June 1786.

Jno Hoge D.S.

Note, there is no dispute in the above draught

John Lukens Esq. S.G

State of Penn!

IN TESTIMONY that the above is a copy of the original remaining on file in the Department of Internal Affairs of Pennsylvania, made conformably to an Act of Assembly approved the 16th day of February, 1833, I have hereunto set my Hand and caused the Seal of said Department to be affixed at Harrisburg, this eighteenth day of June 1908

Henry Howell
Secretary of Internal Affairs.